



Bar - Restaurant

NEUFCHATEAU (88)

347 200 €*

* Agency fees to be paid by the seller



385 m²



9 pièce(s)

PROPERTY DESCRIPTION

near NEUFCHATEAU (88) BAR RESTAURANT - WALLS and FUNDS with LICENSE IV RESTAURANT of 265 m2 + A T4 APARTMENT of 115 m2 Unique opportunity for ambitious restaurateurs! Come and run your business in the birthplace of Joan of Arc, Domrémy la Pucelle, near NEUFCHATEAU (88). We offer a bar-restaurant with license IV, including the walls and the fund, as well as a T4 apartment of 115 m2. The restaurant has a room on 2 levels offering a capacity of approximately 100 covers with the terrace, and the annual turnover is approximately 200 k€. The recent quality equipment, in particular the pizza oven, offers great development potential for your business. Located in an emblematic place in France, very touristy, this property is ideal for restaurateurs looking to stand out. The 115 m2 T4 apartment is currently rented, providing an additional source of income. This property will seduce you with its light, its openness with direct access to the terrace and above all with its fascinating history. Don't miss this unique opportunity to develop your business in a place steeped in history and culture. Contact us now to organize a visit!" NANCY (about 45 mins away), EPINAL (about 50 mins away), MIRECOURT (30 mins away), GIRONCOURT sur Vraine (20 mins away), NEUFCHATEAU (10 mins away) A financing study can be carried out on request (As an example, the loan repayment would be approximately 1,725 Eur / month over a period of 20 years, excluding notary fees) Visit after making an appointment: 7 days a week Email: karine.farigu@capiFrance.fr Tel N. 06 700 900 10 (ideally by SMS, because appointments during the day) WhatsApp N. 00 33 6 83 32 87 48

Les informations sur les risques auxquels ce bien est exposé sont disponibles sur le site Géorisques : [www. georisques. gouv. fr](http://www.georisques.gouv.fr).

** ENGLISH SPEAKERS: please note that CapiFrance has an international department that can help with translations. To see our range of 20,000 properties for sale in France, please visit our CapiFrance website directly. We look forward to finding your dream home!



Karine FARIGU

BAZEGNEY (88270)

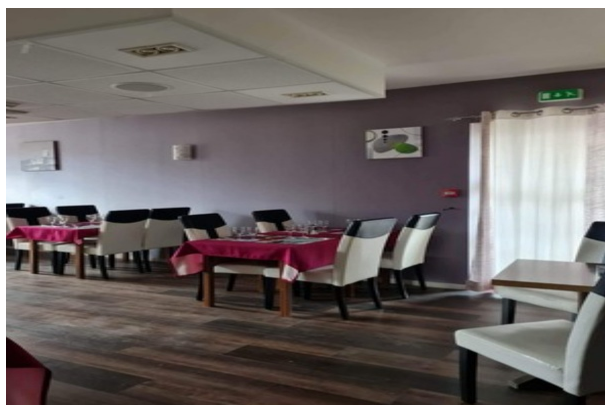
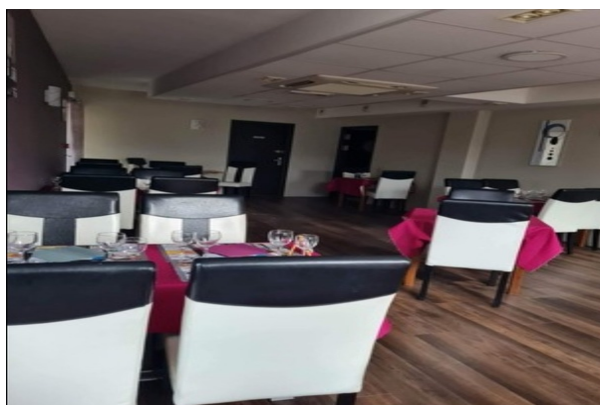
Agent

RSAC : 519 916 233 00017

Courts service city :
EPINAL

(+33)6 70 09 00 10

LE BIEN EN IMAGES





DETAILS

GENERAL

Reference 804039

Property type Bar - Restaurant

Exposure South

SURFACES

Living space 385 m²

COMPOSITION

Number of rooms 9

APPENDIX

Parking extérieur

Parking space 80

Videophone Non



CAPIFRANCE
639 rue du Mas de Verchant, Immeuble Diver'city - 34 170 Castelnau Le Lez
CS 70058 34 473 Pérols Cedex
RCS de Montpellier n° 441 338 985
SAS au capital de 100.000 euros

Ces éléments sont donnés à titre indicatif et de bonne foi et n'ont aucune valeur contractuelle