



Property

SAINT PRYVE SAINT MESMIN (45)

1 290 000 €*

* Agency fees to be paid by the seller



287 m²



10 pièce(s)



7 chambre(s)

PROPERTY DESCRIPTION

SAINT PRYVE SAINT MESMIN, very pretty 19th century property, renovated in 2013, in current colors and respecting the old, nestled in the heart of a large wooded and landscaped park of 1 ha bordered by the Loiret. Beautiful volumes bathed in light and resolutely open onto the park and the terrace and beautiful appointments: lots of character, moldings, beams, fireplaces. On the ground floor: beautiful entrance, living space of around 100 m² facing south with French windows onto the park and comprising: dining room, crossing living room and large contemporary kitchen. bedroom. On the 1st: all the bedrooms face south with a view of the park: master suite with bathroom and dressing room, office, 4 bedrooms overlooking the park and 2 bathrooms. In the 2nd very large bedroom or office-library, office. Outbuilding with games room. Very large landscaped and wooded park, rotunda, lots of charm, access to the Loiret. Garage with attic, cellar, large wood shed. Exceptional location: quiet, close to all amenities, buses, schools, and 15 minutes from Orleans center. Exclusivity. Heart stroke. Les honoraires sont à la charge du vendeur. Les informations sur les risques auxquels ce bien est exposé sont disponibles sur le site Géorisques : [www. georisques. gouv. fr](http://www.georisques.gouv.fr).

**** ENGLISH SPEAKERS:** please note that Capifrance has an international department that can help with translations. To see our range of 20,000 properties for sale in France, please visit our Capifrance website directly. We look forward to finding your dream home!



Nathalie TILLAY

ORLEANS (45000)

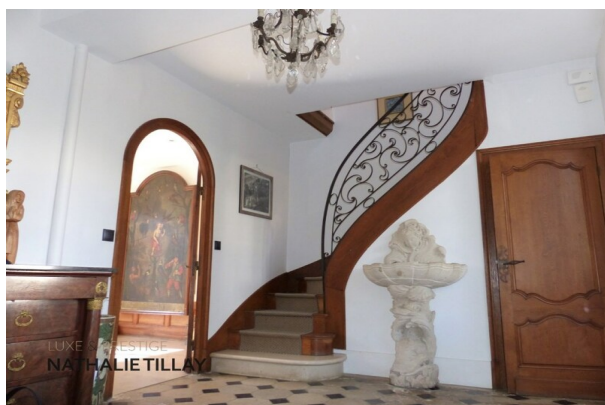
Agent

RSAC : 789 665 635 00015

Courts service city :
ORLEANS

(+33)6 77 25 53 43

LE BIEN EN IMAGES



DETAILS

GENERAL

Reference 807797
Property type Property
Year of construction 1800
Exposure South
View Vue dégagée

SURFACES

Living space 287 m²
Living room surface 45 m²
Land surface 10082 m²

COMPOSITION

Number of rooms 10
Number of bedrooms 7
Number of bathrooms 3
Toilets count 4
Terrace 1

DPE/GES

DPE 227
GES 9

APPENDIX

Parking extérieur
Parking space 3
Garage 1
Cellar 1
Videophone Non

SERVICES

Heater pompe à chaleur
Kitchen aménagée



CAPIFRANCE
639 rue du Mas de Verchant, Immeuble Diver'city - 34 170 Castelnau Le Lez
CS 70058 34 473 Pérols Cedex
RCS de Montpellier n° 441 338 985
SAS au capital de 100.000 euros

Ces éléments sont donnés à titre indicatif et de bonne foi et n'ont aucune valeur contractuelle