



Apartment

COLMAR (68)

130 500 €*

* Agency fees to be paid by the seller



43 m²



2 pièce(s)



2 chambre(s)

PROPERTY DESCRIPTION

It is **EXCLUSIVE** in the heart of the old town, in one of the most beautiful streets of Colmar, that I offer you this pretty 2 room apartment of 43m², fully furnished! You are privileged to have such a beautiful view of the historic district, you can see the roof of the Unterlinden museum, you have a front row seat to the Hansi museum... Your apartment, located on the 1st floor, has it all: well appointed and functional, it is fully equipped and furnished (furniture, bedding, crockery, etc.). The bathroom and the parquet floors are superb, everything has been tastefully redone. The accommodation is currently rented as furnished accommodation for residential use for a period of 1 year. I remain at your disposal... Number of lots in the co-ownership: 17, Average annual amount of the share of charges (projected budget): €519 or €43 per month. Fees are the responsibility of the seller.

Les informations sur les risques auxquels ce bien est exposé sont disponibles sur le site Géorisques : [www. georisques. gouv. fr](http://www.georisques.gouv.fr).

**** ENGLISH SPEAKERS:** please note that Capifrance has an international department that can help with translations. To see our range of 20,000 properties for sale in France, please visit our Capifrance website directly. We look forward to finding your dream home!



Sarah BREINING

COLMAR (68000)

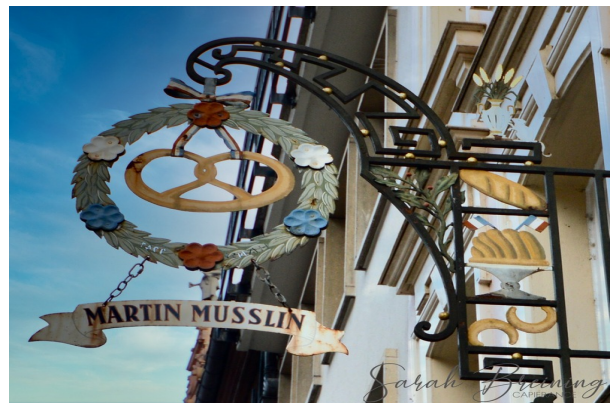
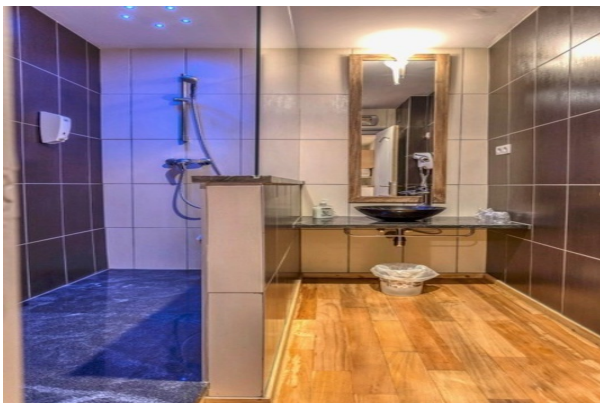
Agent

RSAC : 807 947 197 00032

Courts service city :
COLMAR

(+33)6 47 91 80 29

LE BIEN EN IMAGES



DETAILS

GENERAL

Reference 833117

Property type Apartment

Year of construction 1956

Floor number 1

Floors count 4

Exposure West

View Vue dégagée, sur Toits

Furnished Yes

SURFACES

Living space 43 m²

Surface Carrez Law 43 m²

CONDOMINIUM INFORMATION

Condominium property Yes

Condominium lots count 17

Condominium fees 43 €/mois

Share of expenses 519 €

COMPOSITION

Number of rooms 2

Number of bedrooms 2

Toilets count 1

DPE/GES

DPE 192

GES 6

APPENDIX

Videophone Non

SERVICES

Heater électricité

Kitchen équipée



CAPIFRANCE
639 rue du Mas de Verchant, Immeuble Diver'city - 34 170 Castelnau Le Lez
CS 70058 34 473 Pérols Cedex
RCS de Montpellier n° 441 338 985
SAS au capital de 100.000 euros

Ces éléments sont donnés à titre indicatif et de bonne foi et n'ont aucune valeur contractuelle