



House

TRETS (13)

689 700 €*

* Agency fees to be paid by the seller



202 m²



7 pièce(s)



4 chambre(s)

PROPERTY DESCRIPTION

Located in Trets, a medieval town 25 minutes from Aix en Provence and 35 minutes from the TGV station, discover this beautiful and spacious renovated property of approximately 202 m² on 4000 m² of enclosed and wooded land.

This villa offers you beautiful volumes with on the ground floor, a family entrance, an open room that can be used as an office (currently a gym), a large bedroom of approximately 18 m², a bathroom with WC , a spacious living room with lounge, dining room and open kitchen of approximately 66 m², an adjoining pantry/laundry room of 17 m² with storage in the attic.

Upstairs, a bathroom with shower, bathtub and WC, three bedrooms of 12.85 m², 15.35 m² and 13.4 m² as well as a room serving as a dressing room. From outside the house, you will benefit from a workshop of approximately 10 m² as well as a wooden chalet and a shelter.

You will appreciate its different outdoor spaces with a terrace to the west of 20 m², a second to the east of 60 m² and a 3rd relaxation area to the south landscaped and furnished with pergola. Beautiful flat, wooded land as well as a bowling alley for games of pétanque with friends!

Provence Canal. Gas central heating, reversible air conditioning and wood stove in the living room.

-
VIRTUAL VISIT ON REQUEST.

-
Contact me !

- Fees are the responsibility of the seller.

Les informations sur les risques auxquels ce bien est exposé sont disponibles sur le site Géorisques : [www. georisques. gouv. fr](http://www.georisques.gouv.fr).

** ENGLISH SPEAKERS: please note that Capifrance has an international department that can help with translations. To see our range of 20,000 properties for sale in France, please visit our Capifrance website directly. We look forward to finding your dream home!



Fanny SENSIBLE

TRETS (13530)

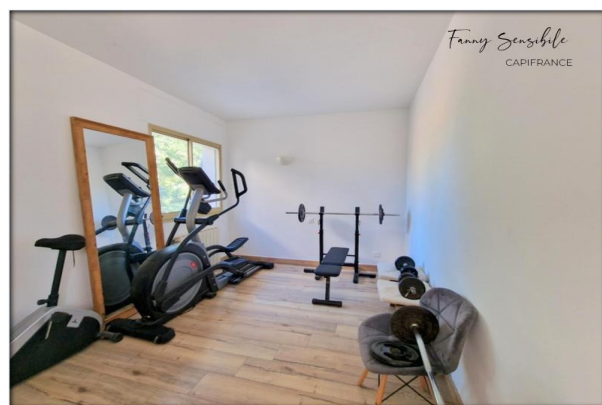
Agent

RSAC : 487 510 596 00033

Courts service city : AIX EN
PROVENCE

(+33)6 22 85 96 71

LE BIEN EN IMAGES



DETAILS

GENERAL

Reference 833345

Property type House

Year of construction 1981

Exposure East

View Vue sur Jardin

SURFACES

Living space 202 m²

Living room surface 43 m²

Land surface 4026 m²

COMPOSITION

Number of rooms 7

Number of bedrooms 4

Number of bathrooms 1

Toilets count 2

Washrooms 1

Terrace 1

DPE/GES

DPE 204

GES 6

APPENDIX

Parking extérieur

Parking space 6

Videophone Non

SERVICES

Heater climatisation réversible

Heater bois

Heater gaz

Kitchen aménagée



CAPIFRANCE
639 rue du Mas de Verchant, Immeuble Diver'city - 34 170 Castelnau Le Lez
CS 70058 34 473 Pérols Cedex
RCS de Montpellier n° 441 338 985
SAS au capital de 100.000 euros

Ces éléments sont donnés à titre indicatif et de bonne foi et n'ont aucune valeur contractuelle