



## Apartment

PUTEAUX (92)

**1 430 000 €\***

\* Agency fees to be paid by the seller



125 m<sup>2</sup>



5 pièce(s)



4 chambre(s)

## PROPERTY DESCRIPTION

Puteaux 92 - City center, close to the PUTEAUX Town Hall esplanade - TOP FLOOR, DUPLEX - 2 terraces with open views (73m<sup>2</sup> in total), sublime family apartment with 5 rooms including 4 bedrooms, with underground parking ground and a cellar at a total price of 1430KE. With a living area of 125m<sup>2</sup>, in Etoile, facing south/west/east. It is located on the 5th and 6th floor/6 of an ultra modern residence with classic and elegant architecture. Entering from the 5th, it is composed of an entrance which serves the staircase to go upstairs, a separate toilet, with earthenware wall tiles and decorative listels on all walls and at frame height. Then we access the 34m<sup>2</sup> living room, through its large bay window and paired with the independent kitchen. bathed in light and sun, facing the 17m<sup>2</sup> terrace allowing you to create another living space in summer. The daylight from one of the 2 bay windows on the terrace will dazzle you! Then a hallway at the right end of the living room will take you to the 2 bedrooms on the terrace and to the bathroom. Upstairs, a hallway leading to 2 slightly attic bedrooms with built-in cupboards, a separate toilet with its hand basin and a bathroom. Very high quality services - Oak parquet, soundproofing screed, double glazing, etc... Low charges - close to busy shops at 300m - Nursery school at 750m, Marechal Leclerc college at 3 minutes on foot. 700m from Puteaux station (Transilien/Tram.) By RER A and train: La Défense-Grande Arche station (RER A and Transilien) connects La Défense to the Opéra district and Saint-Lazare station in less than 15 mins. By tram T2: The "Puteaux" station, accessible in 9 minutes on foot, serves the La Défense — Porte de Versa line Contact CaroliNe on 0663070663

Les informations sur les risques auxquels ce bien est exposé sont disponibles sur le site Géorisques : [www. georisques. gouv. fr](http://www.georisques.gouv.fr).

For more information about this property, please contact our English-speaking staff by telephone (0033499 614472) or e-mail (<[href="mailto:340930123327">href="http://www.capifrance.co.uk">](mailto:340930123327) >[www.capifrance.co.uk](http://www.capifrance.co.uk)</a> Estate Agency CAPIFRANCE – We look forward to finding you your dream home!



**Caroline UZAN**

**NEUILLY-SUR-SEINE  
(92200)**

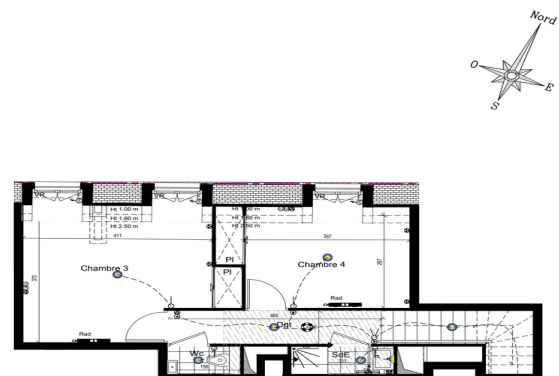
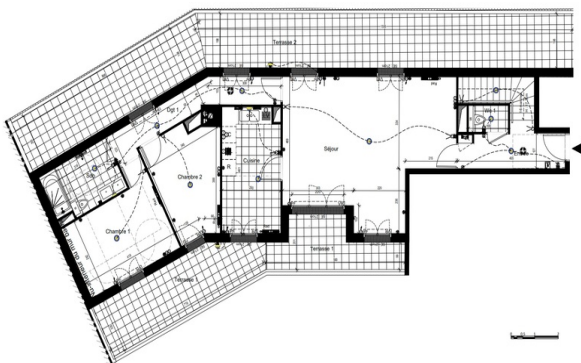
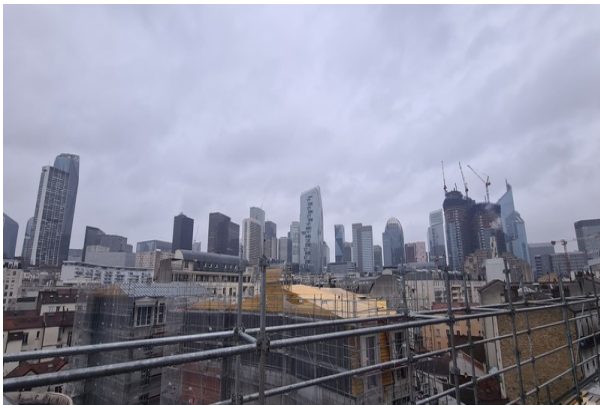
Agent

RSAC : 391 328 549 00061

Courts service city :  
NANTERRE

**(+33)6 63 07 06 63**

## LE BIEN EN IMAGES





## DETAILS

### GENERAL

Reference ..... 304121  
Property type ..... Apartment  
Floor number ..... 5  
Exposure ..... ND

### SURFACES

Living space ..... 125 m²  
Surface Carrez Law ..... 125 m²

### COMPOSITION

Number of rooms ..... 5  
Number of bedrooms ..... 4  
Terrace ..... 1

### APPENDIX

Parking ..... couvert  
Parking space ..... 2  
Videophone ..... Non

### CONDOMINIUM INFORMATION

Condominium property ..... Yes



CAPIFRANCE  
639 rue du Mas de Verchant, Immeuble Diver'city - 34 170 Castelnau Le Lez  
CS 70058 34 473 Pérols Cedex  
RCS de Montpellier n° 441 338 985  
SAS au capital de 100.000 euros

Ces éléments sont donnés à titre indicatif et de bonne foi et n'ont aucune valeur contractuelle