



Apartment

PARIS 20EME ARR. (75)

2 100 000 €\*  
Photo non contractuelle

\* Agency fees to be paid by the seller



109 m<sup>2</sup>



4 pièce(s)

## PROPERTY DESCRIPTION

PARIS 20TH DISTRICT T4 apartment of 109 m<sup>2</sup> located on the top floor, offering 75.30 m<sup>2</sup> of outdoor space. - Reception room of 42.30 m<sup>2</sup> - Kitchen of 11 m<sup>2</sup> - Dgt 1 of 5.60 m<sup>2</sup> - Dgt 2 of 5.5 m<sup>2</sup> - Bedroom 1 of 15.10 m<sup>2</sup> - Bedroom 2 of 9 m<sup>2</sup> - Bedroom 3 of 10, 40 m<sup>2</sup>, - Shower room of 5.40 m<sup>2</sup> - Bathroom of 4.80 m<sup>2</sup> - Terrace 1 of 24.70 m<sup>2</sup> - Terrace 2 of 48 m<sup>2</sup> - Balcony of 2.60 m<sup>2</sup>. This property benefits from a very good daily living environment, measured by the proximity of the following basic services: supermarket, bakery, butcher, post office, doctor, schools, sports field, restaurant. You will also find cinemas less than 15 minutes away. The public transport network is particularly well developed in this area, as evidenced by the high proportion of people using public transport. For Q2 2024. - Number of lots in the co-ownership: 15, Average annual amount of the share of charges (projected budget): €4,800 or €400 per month. Fees are the responsibility of the seller.

Le Diagnostic de Performance Energétique(DPE) a été réalisé selon une méthode valable mais non fiable et non-opposable.

Les informations sur les risques auxquels ce bien est exposé sont disponibles sur le site Géorisques : [www.georisques.gouv.fr](http://www.georisques.gouv.fr).

**\*\* ENGLISH SPEAKERS:** please note that Capifrance has an international department that can help with translations. To see our range of 20,000 properties for sale in France, please visit our Capifrance website directly. We look forward to finding your dream home!



**Joseph BENHENNA**

**PARIS-1ER-  
ARRONDISSEMENT  
(75001)**

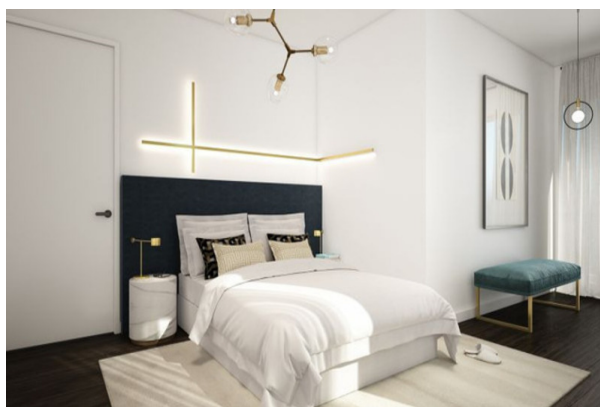
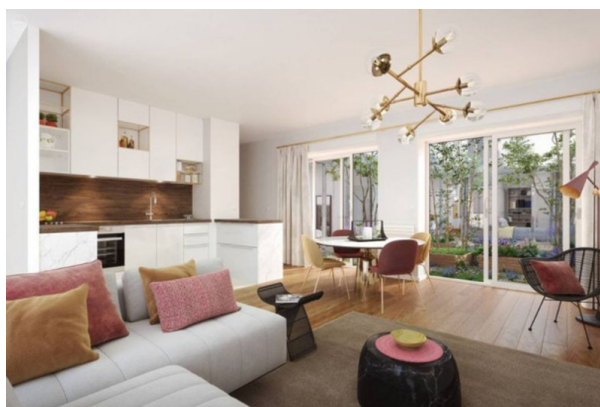
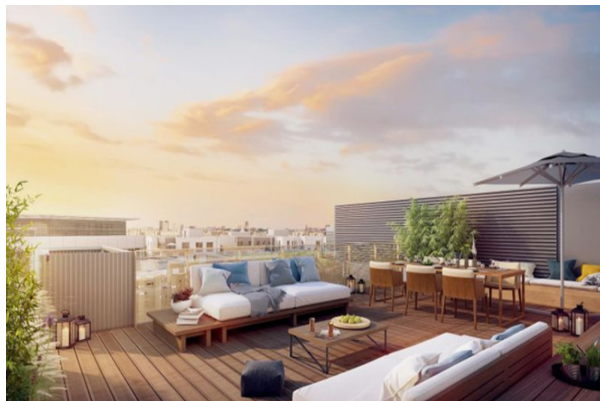
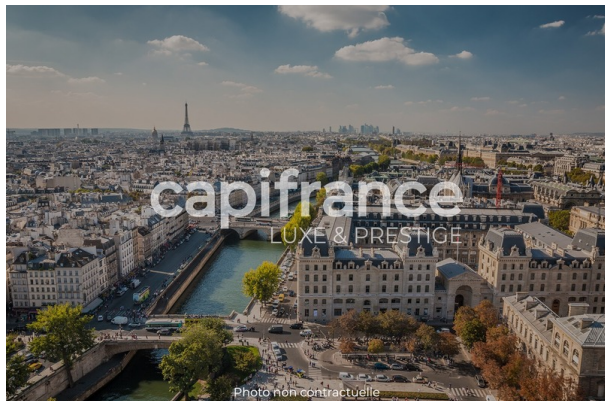
Agent

RSAC : 491 297 826 00027

Courts service city : PARIS

**(+33)6 87 31 32 74**

## LE BIEN EN IMAGES



## DETAILS

### GENERAL

Reference ..... 839019

Property type ..... Apartment

Floor number ..... 7

Floors count ..... 7

### SURFACES

Living space ..... 109 m²

Surface Carrez Law ..... 115 m²

Living room surface ..... 42 m²

### CONDOMINIUM INFORMATION

Condominium property ..... Yes

Condominium lots count ..... 15

Condominium fees ..... 400 €/mois

Share of expenses ..... 4 800 €

### COMPOSITION

Number of rooms ..... 4

Toilets count ..... 2

### APPENDIX

Videophone ..... Non



CAPIFRANCE  
639 rue du Mas de Verchant, Immeuble Diver'city - 34 170 Castelnau Le Lez  
CS 70058 34 473 Pérols Cedex  
RCS de Montpellier n° 441 338 985  
SAS au capital de 100.000 euros

Ces éléments sont donnés à titre indicatif et de bonne foi et n'ont aucune valeur contractuelle