



Bourgeois house

NEUFCHATEAU (88)

650 000 €*
* Agency fees to be paid by the seller



589 m²



16 pièce(s)



7 chambre(s)

PROPERTY DESCRIPTION

Magnificent this private mansion from the beginning of the 18th century, listed as a historical monument, located in the center of Neufchâteau, 72 km from Epinal, 63 km from Nancy and only 32 km from Vittel.

If you are looking for something really incredible to come and rest from time to time, tele-work in peace or even set up your doctor's office there, this house could well allow you to carry out your project.

The owners have taken care of it for years, no major work is to be expected.

And nothing would prevent you from having a bed and breakfast activity with the superb outbuilding dating from 1787. Or even renting it out for weddings or receptions.

Please send me an SMS with your name and email address, specifying that it is the "Neufchâteau private mansion". I will come back to you quickly to tell you more and you will then send the key (password) to visit it virtually. And if it continues to seduce you, we'll talk about it and go find out together.

Vincent DESHAYES
Capifrance

. Les honoraires sont à la charge du vendeur.

Les informations sur les risques auxquels ce bien est exposé sont disponibles sur le site Géorisques : www.georisques.gouv.fr.

**** ENGLISH SPEAKERS:** please note that Capifrance has an international department that can help with translations. To see our range of 20,000 properties for sale in France, please visit our Capifrance website directly. We look forward to finding your dream home!



Vincent DESHAYES

NANCY (54000)

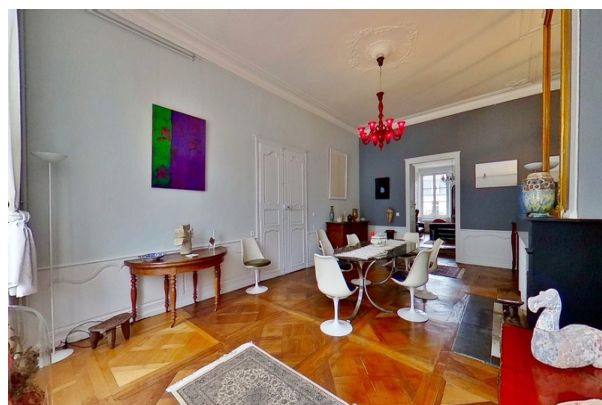
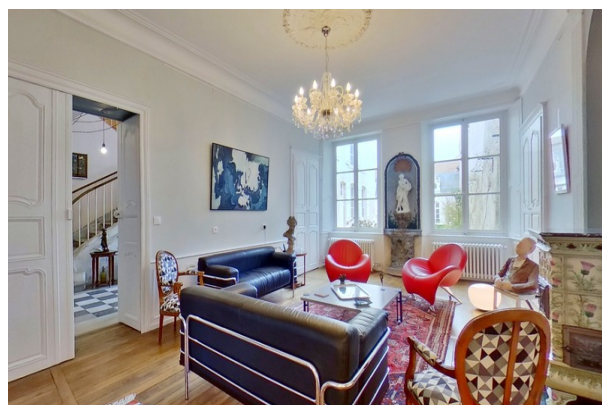
Agent

RSAC : 823 810 296 00017

Courts service city :
NANCY

(+33)7 69 37 85 75

LE BIEN EN IMAGES



DETAILS

GENERAL

Reference 843116

Property type Bourgeois house

Year of construction 1700

Exposure N-E / S-W

View Vue dégagée, sur Jardin, sur Village

SURFACES

Living space 589 m²

Living room surface 62 m²

Land surface 1302 m²

COMPOSITION

Number of rooms 16

Number of bedrooms 7

Number of bathrooms 4

Toilets count 4

Washrooms 2

Terrace 1

APPENDIX

Parking couvert

Parking space 3

Garage 1

Cellar 1

Videophone Non

SERVICES

Heater gaz

Kitchen aménagée

Intercom Yes



CAPIFRANCE
639 rue du Mas de Verchant, Immeuble Diver'city - 34 170 Castelnau Le Lez
CS 70058 34 473 Pérols Cedex
RCS de Montpellier n° 441 338 985
SAS au capital de 100.000 euros

Ces éléments sont donnés à titre indicatif et de bonne foi et n'ont aucune valeur contractuelle