



Apartment

VALLAURIS (06)

979 000 €*

* Agency fees to be paid by the seller



100 m²



3 pièce(s)



2 chambre(s)

PROPERTY DESCRIPTION

CANNES/VALLAURIS: Superb renovated apartment on the second floor, 100m² of living space, with panoramic sea views. Located at the entrance to Cannes and a few minutes from the Croisette in a secure residence with caretaker. 3-room apartment. Composed of an entrance, a living room/kitchen of more than 40 m² extended by a magnificent terrace with a contemplative sea view. The living room area includes a modern American kitchen with a central island equipped with a wine cellar. Night side, two en-suite bedrooms with bathroom/shower and dressing area. Apartment fully air-conditioned under duct. A cellar and a garage complete this property. Number of lots in the co-ownership: 16, Average annual amount of the share of charges (projected budget)(577): €6,928 or €577 per month. Fees are the responsibility of the seller.

Les informations sur les risques auxquels ce bien est exposé sont disponibles sur le site Géorisques : [www. georisques. gouv. fr](http://www.georisques.gouv.fr).

**** ENGLISH SPEAKERS:** please note that Capifrance has an international department that can help with translations. To see our range of 20,000 properties for sale in France, please visit our Capifrance website directly. We look forward to finding your dream home!



Pascal FRAPARD

NICE (06200)

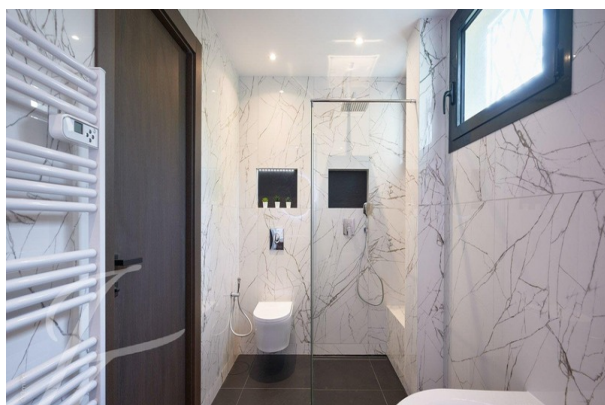
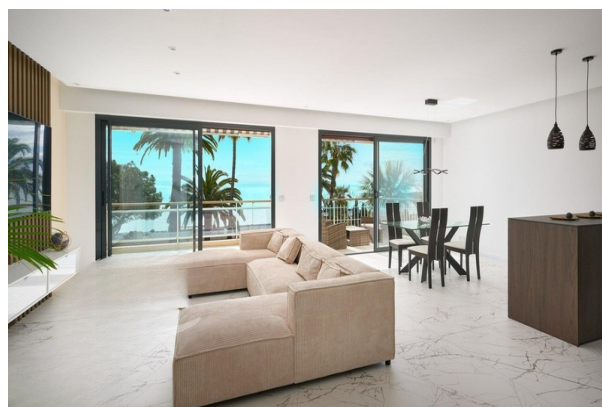
Agent

RSAC : 381 385 897 00057

Courts service city : NICE

(+33)6 82 47 26 57

LE BIEN EN IMAGES



DETAILS

GENERAL

Reference 845386

Property type Apartment

Floor number 2

Floors count 3

View Vue dégagée, Panoramique, sur Jardin, sur Mer

Furnished Yes

SURFACES

Living space 100 m²

Surface Carrez Law 100 m²

Living room surface 49 m²

CONDOMINIUM INFORMATION

Condominium property Yes

Condominium lots count 16

Condominium fees 577 €/mois

Share of expenses 6 928 €

COMPOSITION

Number of rooms 3

Number of bedrooms 2

Number of bathrooms 1

Toilets count 2

Washrooms 1

Balcony 1

Terrace 1

DPE/GES

DPE 213

GES 6

APPENDIX

Parking garage

Garage 1

Cellar 1

Videophone Non

SERVICES

Air conditioning Yes

Elevator Yes

Heater électricité

Heater climatisation réversible

Kitchen américaine

Interpcom Yes



CAPIFRANCE
639 rue du Mas de Verchant, Immeuble Diver'city - 34 170 Castelnau Le Lez
CS 70058 34 473 Pérols Cedex
RCS de Montpellier n° 441 338 985
SAS au capital de 100.000 euros

Ces éléments sont donnés à titre indicatif et de bonne foi et n'ont aucune valeur contractuelle