



House

FRANGY (74)

540 000 €*

* Agency fees to be paid by the seller



140 m²



5 pièce(s)



3 chambre(s)

PROPERTY DESCRIPTION

To grab at FRANGY rare for sale!!! Great opportunity for this well-maintained 147m² useful detached villa built in 1990 which has retained its charm through its modernity and style. Perched on a plot of approximately 1000 m² on the heights of Frangy on a slope with an open view, it offers a panoramic view of the mountains around Lake Annecy and Mont Blanc. Spacious and bright with its ground floor, it includes a pleasant large functional equipped kitchen, a beautiful living room/living room bathed in light with access to its semi-covered East-South terrace and a separate toilet. The half-level sleeping area offers you a bathroom, three bedrooms including a large master bedroom with shower room and an office upstairs. A basement with garage and a garden shed accompany this property with a large tarmac courtyard. Ideally located about ten minutes from the Eloise tollbooth towards Saint Julien/Geneva far from the congestion of road traffic, this favorite property is ideal for a large family or cross-border commuters. Frangy in full expansion offers you all the daily amenities namely its shops, schools, medical, associations, tennis etc... If this property corresponds to your search for a real estate project do not hesitate to contact me, see you soon for a visit .

Les honoraires sont à la charge du vendeur.

Les informations sur les risques auxquels ce bien est exposé sont disponibles sur le site Géorisques : www.georisques.gouv.fr.

**** ENGLISH SPEAKERS:** please note that Capifrance has an international department that can help with translations. To see our range of 20,000 properties for sale in France, please visit our Capifrance website directly. We look forward to finding your dream home!



Evelyne LAMOUILLE

CLERMONT (74270)

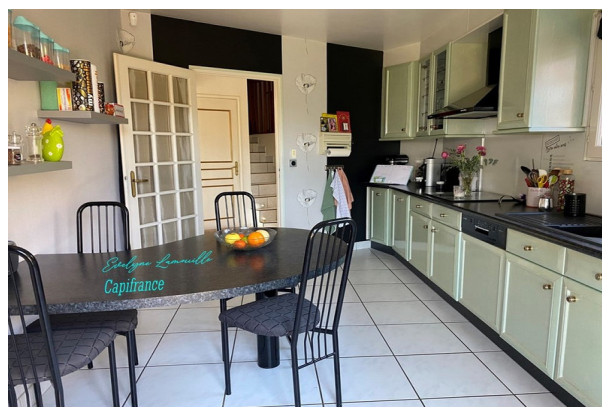
Agent

RSAC : 788 807 576 00020

Courts service city :
THONON LES BAINS

(+33)6 32 02 33 37

LE BIEN EN IMAGES



DETAILS

GENERAL

Reference 845435

Property type House

Year of construction 1990

Exposure S-W

Vue dégagée, Panoramique, sur Jardin, sur
Montagne, sur Village

SURFACES

Living space 140 m²

Living room surface 34 m²

Land surface 1000 m²

COMPOSITION

Number of rooms 5

Number of bedrooms 3

Number of bathrooms 1

Toilets count 1

Washrooms 1

Terrace 1

DPE/GES

DPE 329

GES 11

APPENDIX

Parking extérieur

Parking space 4

Garage 1

Cellar 1

Videophone Non

SERVICES

Heater électricité

Kitchen aménagée



CAPIFRANCE
639 rue du Mas de Verchant, Immeuble Diver'city - 34 170 Castelnau Le Lez
CS 70058 34 473 Pérols Cedex
RCS de Montpellier n° 441 338 985
SAS au capital de 100.000 euros

Ces éléments sont donnés à titre indicatif et de bonne foi et n'ont aucune valeur contractuelle