



Contemporary house

CHESSY (77)

990 000 €*

* Agency fees to be paid by the seller



234 m²



9 pièce(s)



7 chambre(s)

PROPERTY DESCRIPTION

Close to CHESSY architect's house WITHOUT WORK 9 rooms of 234 m² (290 m² useful) - Cathedral living room - 5 master suites - 7 bedrooms - Swimming pool - Verandas - Garages and parking lots - Land of 1,300 m² You are looking for an elegant architect-designed house in a sought-after area - in full development, quiet with a swimming pool? I offer you this charming independent residence (approximately 290 m² useful surface area), bright, carefully maintained. Great quality and comfort services. Entrance hall, living space of 58 m² with double west-facing cathedral living room - bathed in light with its large windows, its beautiful exposure and its opening onto the 1st veranda and the garden; its fitted kitchen. Plenty of storage and functional spaces (pantry, utility room, laundry room). For the sleeping area: 7 bedrooms which can also be converted (office, library, etc.): 2 master suites on the ground floor Upstairs: 3 master suites as well as 2 other bedrooms Second veranda with its beautiful indoor swimming pool and heated. A double garage, numerous parking spaces. Character house full of charm, a real FAVORITE! OTHER INFORMATION: - Without work - Useful surface area: approximately 290 m² - Photovoltaic panels - Recent work and maintenance - Fiber - 5 km from the nearest station (train access to Paris via Lagny sur Marne or Esbly) - 6 km from Disneyland Paris, Val d'Europe, the Vallée Village and the Chessy TGV/OUIGO or RER A station - Access to the A4 motorway - school and bus transport on foot - 26 km from Roissy CDG airport Are you interested, do you need additional information? Contact me, I will be delighted to show you this beautiful house. Les honoraires sont à la charge du vendeur.

Les informations sur les risques auxquels ce bien est exposé sont disponibles sur le site Géorisques : www.georisques.gouv.fr.

**** ENGLISH SPEAKERS:** please note that Capifrance has an international department that can help with translations. To see our range of 20,000 properties for sale in France, please visit our Capifrance website directly. We look forward to finding your dream home!



**Christophe
MICHAUDELLÉ**

MEAUX (77100)

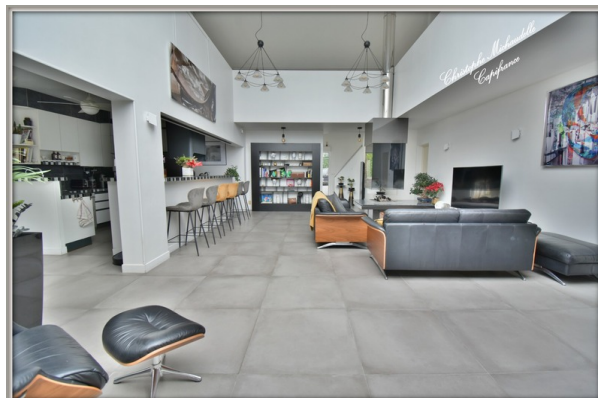
Agent

RSAC : 807 514 039 00013

Courts service city :
MEAUX

(+33)6 24 17 46 57

LE BIEN EN IMAGES



DETAILS

GENERAL

Reference 846754

Property type Contemporary house

Year of construction 1990

Exposure TRAVERSANT E-W

V Vue dégagée, Panoramique, sur Jardin, sur Piscine

SURFACES

Living space 234 m²

Surface Carrez Law 234 m²

Living room surface 37 m²

Land surface 1300 m²

COMPOSITION

Number of rooms 9

Number of bedrooms 7

Number of bathrooms 2

Toilets count 5

Washrooms 2

DPE/GES

DPE 174

GES 5

APPENDIX

Parking extérieur

Parking space 8

Garage 2

Videophone Oui

SERVICES

Heater électricité

Heater pompe à chaleur

Heater gaz

Kitchen aménagée

Interpcom Yes



CAPIFRANCE
639 rue du Mas de Verchant, Immeuble Diver'city - 34 170 Castelnau Le Lez
CS 70058 34 473 Pérols Cedex
RCS de Montpellier n° 441 338 985
SAS au capital de 100.000 euros

Ces éléments sont donnés à titre indicatif et de bonne foi et n'ont aucune valeur contractuelle