



Contemporary house

SAVONNIERES (37)

884 000 €*

* Agency fees to be paid by the seller



280 m²



8 pièce(s)



4 chambre(s)

PROPERTY DESCRIPTION

Contemporary house of 280 m2 built in 2010 in Savonnières in a quiet cul-de-sac, nestled in a plot of 1400 m2. This very well built and extremely well maintained property consists of a beautiful entrance, a large open living-dining room-kitchen space, and a small adjoining living room. High-end cuisine. Very beautiful light thanks to the numerous bay windows with a view of the garden. A complete master suite with a large dressing room and a laundry room complete this first level. Upstairs, three very good-sized bedrooms, a bathroom, a large mezzanine that can accommodate a large billiard table and an office, access to the upper floor via a beautiful stone staircase. Possibility of creating one or two additional bedrooms by separating the office space. Family house turned towards nature, well organized, easy to live in and very friendly. Double motorized garage including a summer kitchen with direct access to the garden. Cellar in the basement allowing additional storage space. Very beautiful salt swimming pool of 8mx 4m protected by an electric roller shutter, garden shed and pétanque court. Automatic watering and heat pump. Long sale. Fees are the responsibility of the seller.

Les informations sur les risques auxquels ce bien est exposé sont disponibles sur le site Géorisques : [www. georisques. gouv. fr](http://www.georisques.gouv.fr).

**** ENGLISH SPEAKERS:** please note that Capifrance has an international department that can help with translations. To see our range of 20,000 properties for sale in France, please visit our Capifrance website directly. We look forward to finding your dream home!



Jo BESSEREAU

TOURS (37000)

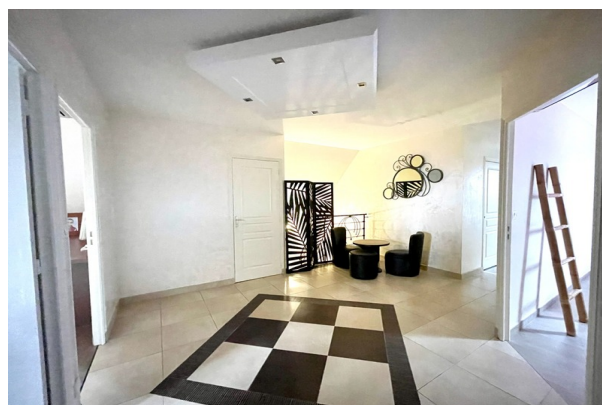
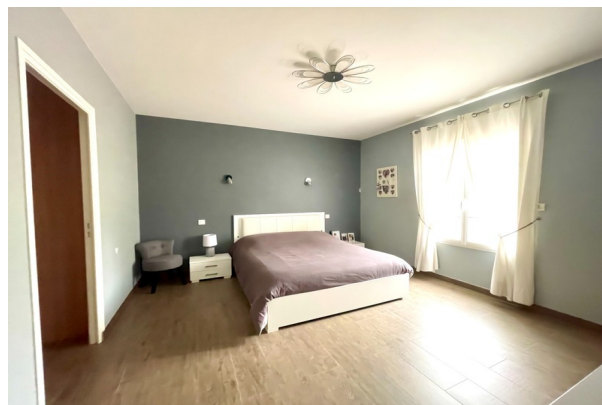
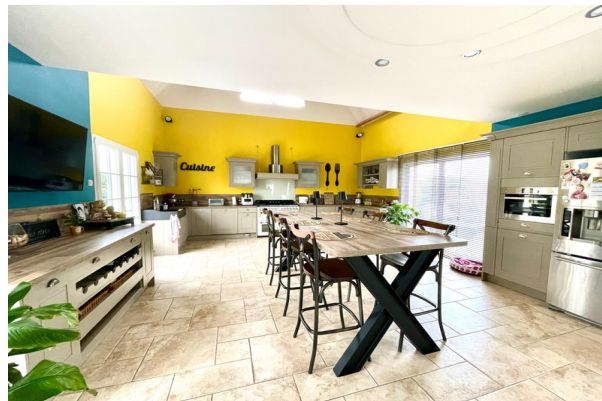
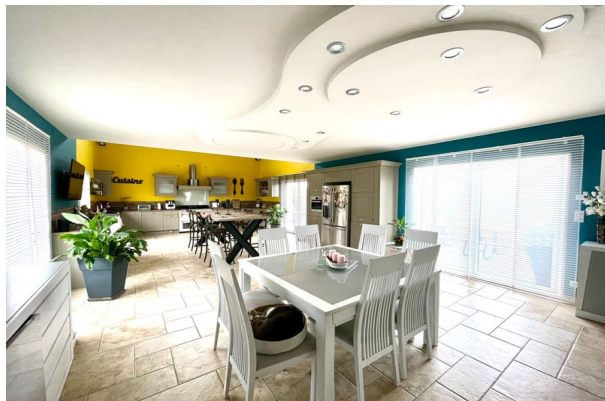
Agent

RSAC : 313 787 038 00030

Courts service city :
TOURS

(+33)6 28 63 11 46

LE BIEN EN IMAGES



DETAILS

GENERAL

Reference 847408
Property type Contemporary house
Year of construction 2010
Exposure S-W
View Vue dégagée, sur Jardin, sur Piscine

SURFACES

Living space 280 m²
Living room surface 60 m²
Land surface 1400 m²

COMPOSITION

Number of rooms 8
Number of bedrooms 4
Number of bathrooms 2
Terrace 1

DPE/GES

DPE 77
GES 2

APPENDIX

Parking extérieur
Parking space 4
Garage 1
Cellar 1
Videophone Oui

SERVICES

Heater pompe à chaleur
Kitchen américaine
Swimming-pool Yes
Intercom Yes



CAPIFRANCE
639 rue du Mas de Verchant, Immeuble Diver'city - 34 170 Castelnau Le Lez
CS 70058 34 473 Pérols Cedex
RCS de Montpellier n° 441 338 985
SAS au capital de 100.000 euros

Ces éléments sont donnés à titre indicatif et de bonne foi et n'ont aucune valeur contractuelle