



Villa

LA VALETTE DU VAR (83)

795 000 €*
capifrance

* Agency fees to be paid by the seller



213 m²



7 pièce(s)

PROPERTY DESCRIPTION

LA VALETTE DU VAR, 7-room house 210m² on land 1760 with sea view. BAUDOUVIN on the heights, superb property, villa of more than 210m² on 1760m² of land.

Come and discover this sumptuous villa located on the heights of Baudouvin with sea views from all rooms.

The large entrance opens directly onto the spacious living room of over 50m².

A beautiful mezzanine completes this pleasant living room. On this same level a large dining kitchen equipped with its pantry and laundry room. Upstairs 4 beautiful bedrooms, one of more than 20m² and 2 large bathrooms, one of which is private for 2 bedrooms. 3 of them open onto the balcony with sea view.

Enormous potential for this villa once restored to your taste. Very rare in this sector. To visit quickly. Virtual tour available on request.

Contact Luc Maridet Capifrance. Les honoraires sont à la charge du vendeur.

Les informations sur les risques auxquels ce bien est exposé sont disponibles sur le site Géorisques : [www. georisques. gouv. fr](http://www.georisques.gouv.fr).

**** ENGLISH SPEAKERS:** please note that Capifrance has an international department that can help with translations. To see our range of 20,000 properties for sale in France, please visit our Capifrance website directly. We look forward to finding your dream home!



Luc MARIDET

**LA-VALETTE-DU-VAR
(83160)**

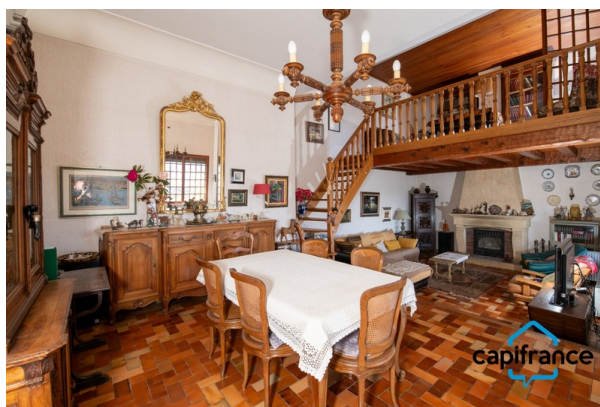
Agent

RSAC : 838 560 159 00017

Courts service city :
TOULON

(+33)6 14 78 82 17

LE BIEN EN IMAGES



DETAILS

GENERAL

Reference 848402
Property type Villa
Exposure South
View Vue sur Mer

SURFACES

Living space 213 m²
Living room surface 50 m²
Land surface 1760 m²

COMPOSITION

Number of rooms 7

DPE/GES

DPE 151
GES 46

APPENDIX

Parking extérieur
Parking space 3
Garage 1
Cellar 1
Videophone Non

SERVICES

Heater fuel
Kitchen équipée
Interpcom Yes



CAPIFRANCE
639 rue du Mas de Verchant, Immeuble Diver'city - 34 170 Castelnau Le Lez
CS 70058 34 473 Pérols Cedex
RCS de Montpellier n° 441 338 985
SAS au capital de 100.000 euros

Ces éléments sont donnés à titre indicatif et de bonne foi et n'ont aucune valeur contractuelle