



House

GUIPAVAS (29)

655 200 €



142 m²



6 pièce(s)



4 chambre(s)

PROPERTY DESCRIPTION

LE RODY - 7-room house with magnificent sea view, less than 200 meters from the beach, the port of Moulin Blanc on wooded land of more than 1500 square meters.

The large entrance leads to all the rooms on the ground floor: a separate fitted and equipped kitchen, a living room, dining room is extended by a large south-facing terrace with a superb sea view with a fireplace which punctuates the space.

A bedroom with bathroom, toilet and cupboards complete this level.

On the first floor, three beautiful bedrooms, two of which have a sea view, a very beautiful dressing room, a bathroom and a separate toilet. In the basement, a room is converted into an office and a garage area for parking 2 vehicles.

Swimming pool land. Possibility of parking several vehicles on the property. Les honoraires d'agence sont à la charge de l'acquéreur, soit 4,00% TTC du prix hors honoraires.

Les informations sur les risques auxquels ce bien est exposé sont disponibles sur le site Géorisques : [www. georisques. gouv. fr](http://www.georisques.gouv.fr).

**** ENGLISH SPEAKERS:** please note that Capifrance has an international department that can help with translations. To see our range of 20,000 properties for sale in France, please visit our Capifrance website directly. We look forward to finding your dream home!



Caroline BOURLIEUX

**LE-RELECQ-KERHUON
(29480)**

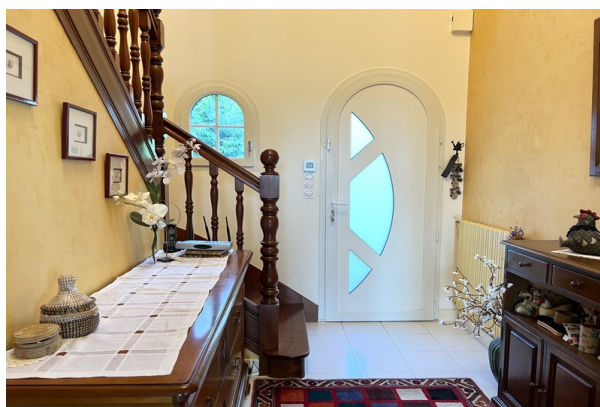
Agent

RSAC : 918 000 456 00015

Courts service city : BREST

(+33)6 16 57 11 22

LE BIEN EN IMAGES



DETAILS

GENERAL

Reference 850366

Property type House

Year of construction 1982

SURFACES

Living space 142 m²

Living room surface 36 m²

Land surface 1546 m²

COMPOSITION

Number of rooms 6

Number of bedrooms 4

Number of bathrooms 1

Toilets count 2

Washrooms 1

DPE/GES

DPE 215

GES 41

APPENDIX

Parking extérieur

Parking space 5

Garage 1

Videophone Non

SERVICES

Heater bois

Heater fuel

Kitchen aménagée



CAPIFRANCE
639 rue du Mas de Verchant, Immeuble Diver'city - 34 170 Castelnau Le Lez
CS 70058 34 473 Pérols Cedex
RCS de Montpellier n° 441 338 985
SAS au capital de 100.000 euros

Ces éléments sont donnés à titre indicatif et de bonne foi et n'ont aucune valeur contractuelle