



Tiling - Masonry

OREE D ANJOU (49)

594 000 €



372 m²



5 pièce(s)

PROPERTY DESCRIPTION

Exclusively at Capifrance, a great company to be taken over in the form of a sale of shares + premises. Masonry company (renovation and new construction), renovation, earthworks and structural work. 4 experienced and independent employees working in pairs + the manager and his wife (office worker). Work area mainly in the Orée commune of Anjou and around. near Ancenis, A11 motorway 10 minutes away, Nantes east access: 20 minutes, Angers: 45 minutes. last known turnover: 415 Ke, EBER (income and managerial charges included): 77 Ke. Full order book 6 months in advance. 9-year commercial lease will be renewed at the time of sale; monthly rent excluding VAT/HC 3000e, for a premises of 372m2 (office, WC, employee area, workshop with mezzanine, good ceiling height, on an enclosed plot of land of 1800 m2, employee parking in front of the office, construction in 2014). 5 weeks of annual leave (August and December) Saturday/Sunday and public holidays as weekly leave. Breakdown of the sale price agency fees included: transfers of shares: 154,000th HAI building + enclosed land: 440,000th HAI Complete file on request.

Les informations sur les risques auxquels ce bien est exposé sont disponibles sur le site Géorisques : [www. georisques. gouv. fr](http://www.georisques.gouv.fr).

**** ENGLISH SPEAKERS:** please note that Capifrance has an international department that can help with translations. To see our range of 20,000 properties for sale in France, please visit our Capifrance website directly. We look forward to finding your dream home!



Serge PASQUELIN

BAUGE (49150)

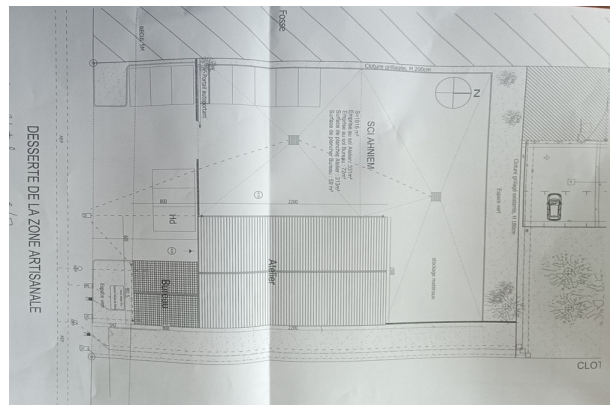
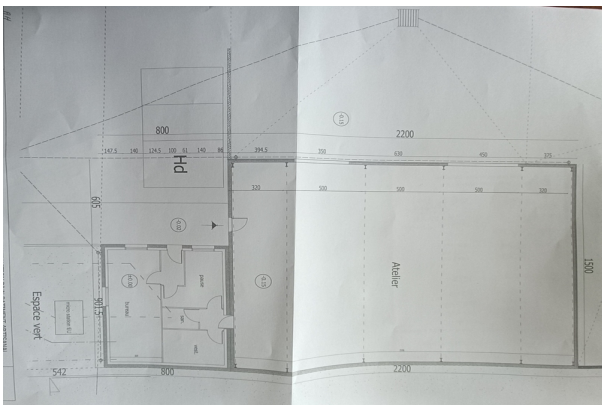
Agent

RSAC : 404 446 189 00049

Courts service city :
ANGERS

(+33)6 95 55 27 53

LE BIEN EN IMAGES





DETAILS

GENERAL

Reference 852733

Property type Tiling - Masonry

Year of construction 2014

Exposure East

SURFACES

Living space 372 m²

COMPOSITION

Number of rooms 5

APPENDIX

Parking extérieur

Parking space 6

Videophone Non



CAPIFRANCE
639 rue du Mas de Verchant, Immeuble Diver'city - 34 170 Castelnau Le Lez
CS 70058 34 473 Pérols Cedex
RCS de Montpellier n° 441 338 985
SAS au capital de 100.000 euros

Ces éléments sont donnés à titre indicatif et de bonne foi et n'ont aucune valeur contractuelle