



Contemporary house

TOURS (37)

799 000 €*

* Agency fees to be paid by the seller



225 m²



7 pièce(s)



5 chambre(s)

PROPERTY DESCRIPTION

Exceptional house with very good amenities, built in 2020 and with 5 bedrooms, located in La Membrolle-sur-Choisille, 20 minutes from Tours. Within a plot of 3000 m², this contemporary and well-made house offers an ideal environment for your family. With a total living space of 225 m², it consists of two levels and a basement including a storage space and an exceptional wine cellar. The bright ground floor offers an entrance with a large, very practical dressing room, a large, friendly living and dining room area of 65 m² with wood stove, a semi-open kitchen with utility room and laundry room, a very spacious master suite. including a bedroom, a dressing room, a high-end bathroom with bathtub and shower, and a second master suite with shower room and dressing room. Large bay window allowing direct access to a very pleasant terrace of 110 m² facing south west, which is extended by a 10*5 swimming pool. On the second floor, landing and three beautiful bedrooms with dressing room and a bathroom. Large motorized garage. Garden chalet for storing your garden tools and pétanque court. Heat pump, DPE A, energy-efficient house. No work needed. House under ten-year warranty. Bus stop and school bus nearby to reach Tours Centre.

Les honoraires sont à la charge du vendeur.

Les informations sur les risques auxquels ce bien est exposé sont disponibles sur le site Géorisques : www.georisques.gouv.fr.

**** ENGLISH SPEAKERS:** please note that Capifrance has an international department that can help with translations. To see our range of 20,000 properties for sale in France, please visit our Capifrance website directly. We look forward to finding your dream home!



Sophie FRIEH

TOURS (37000)

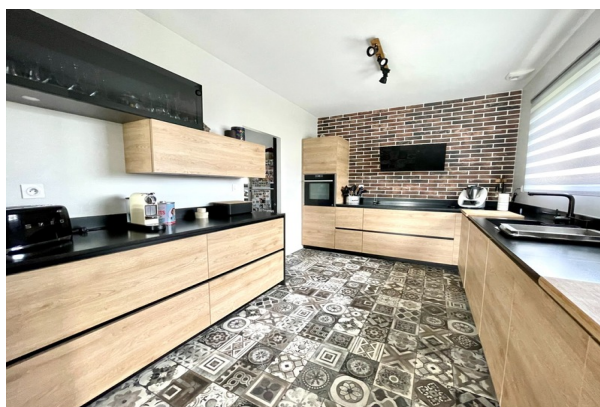
Agent

RSAC : 792 045 395 00029

Courts service city :
TOURS

(+33)7 69 86 87 67

LE BIEN EN IMAGES



DETAILS

GENERAL

Reference 852759

Property type Contemporary house

Year of construction 2020

Exposure S-W

View Vue sur Jardin

SURFACES

Living space 225 m²

Living room surface 65 m²

Land surface 3008 m²

COMPOSITION

Number of rooms 7

Number of bedrooms 5

Number of bathrooms 1

Toilets count 3

Washrooms 2

Terrace 1

DPE/GES

DPE 48

GES 1

APPENDIX

Parking extérieur

Parking space 4

Garage 1

Cellar 1

Videophone Oui

SERVICES

Air conditioning Yes

Heater pompe à chaleur

Kitchen aménagée

Swimming-pool Yes

Intercom Yes



CAPIFRANCE
639 rue du Mas de Verchant, Immeuble Diver'city - 34 170 Castelnau Le Lez
CS 70058 34 473 Pérols Cedex
RCS de Montpellier n° 441 338 985
SAS au capital de 100.000 euros

Ces éléments sont donnés à titre indicatif et de bonne foi et n'ont aucune valeur contractuelle